

# Feedback to Transfer-Originating Institutions

COTA Transfer Conference  
Columbia, Missouri  
January 30, 2009

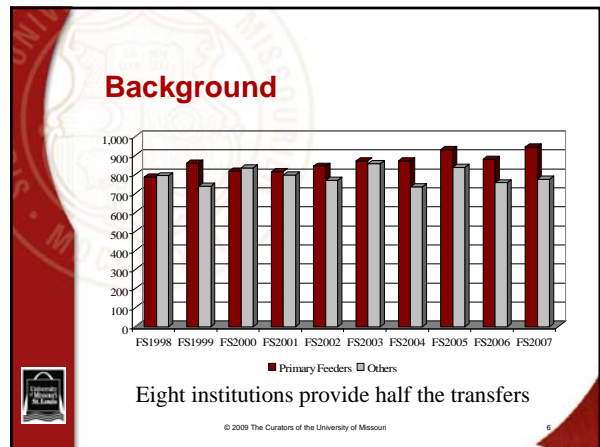
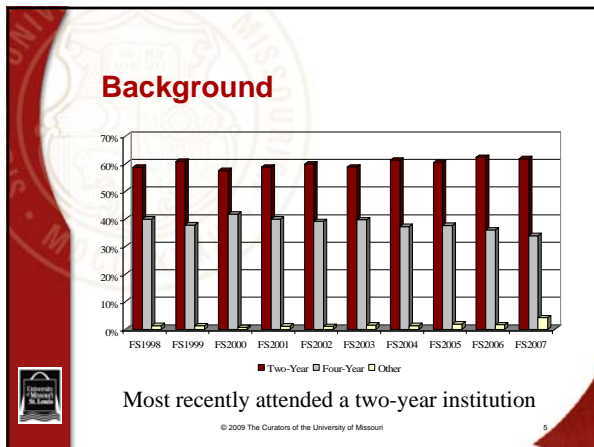
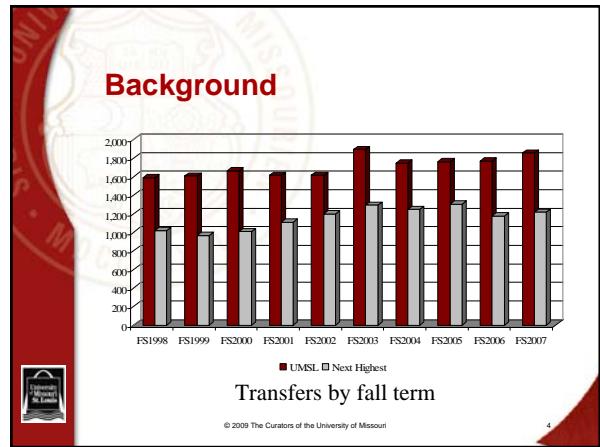
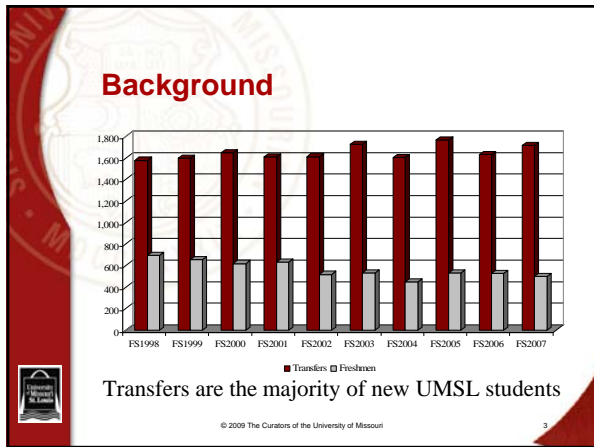
Mr. Lawrence W. Westermeyer  
Director, Institutional Research  
University of Missouri - St. Louis

Dr. Carol Sholy  
Institutional Research Associate  
University of Missouri - St. Louis

## Overview


- Background
- Rationale
- Goals
- Methodology
- Reports
- Usage by partners
- Questions and answers

© 2009 The Curators of the University of Missouri



## Rationale

- ❑ Transfer preparation mission
- ❑ Existing data sources provide high-level views
- ❑ No national or state-wide transfer student success standards
- ❑ Difficult to measure this mission




© 2009 The Curators of the University of Missouri

7

## Rationale

- ❑ Highlight academic successes and challenges after transfer
- ❑ Data must be meaningful to both two-year and four-year institutions
- ❑ Collaborative use of data to identify strengths and weaknesses




© 2009 The Curators of the University of Missouri

8

## Goals

- ❑ Help students succeed
- ❑ Provide feedback to institutions
- ❑ Dispel transfer student performance myths
- ❑ Build stronger relationships




© 2009 The Curators of the University of Missouri

9

## Methodology

- ❑ Population – Fall 2007 on-campus undergraduates
- ❑ Retain demographic characteristics
- ❑ Find courses taken in Fall 2007
- ❑ Extract term GPA, cumulative GPA, hours attempted, quality points




© 2009 The Curators of the University of Missouri

10

## Methodology

- ❑ Count number of post-secondary institutions attended
- ❑ Determine most recently attended institution and type
- ❑ Sum hours transferred
- ❑ Determine if AA degree or Missouri General Education requirements met




© 2009 The Curators of the University of Missouri

11

## Methodology

- ❑ Extract bachelors degrees awarded in FY2007
- ❑ Find original major and enrollment category
- ❑ Determine transfer institution, if any
- ❑ Count number of post-secondary schools



© 2009 The Curators of the University of Missouri

12

## Methodology

- ❑ Students placed in one of six groups:
  - ❑ Selected (base) Institution
  - ❑ Selected Institution plus Others
  - ❑ Native
  - ❑ Other two-year
  - ❑ Other four-year
  - ❑ Other (military credit, CLEP, etc.)



## Methodology

- ❑ The total number of courses by student category are counted
- ❑ The percentage of each grade in each category is calculated
- ❑ A data table and bar chart are produced
- ❑ Courses are stratified by all levels, lower and upper division



## Reports

- ❑ Demographics
- ❑ Performance
- ❑ Degree recipients

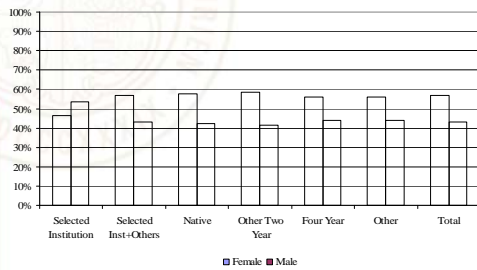


## Reports

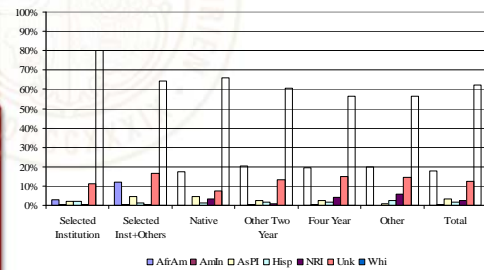
- ❑ Demographics
  - ❑ Gender
  - ❑ Ethnic origin
  - ❑ Enrollment status
  - ❑ Awards/hours earned

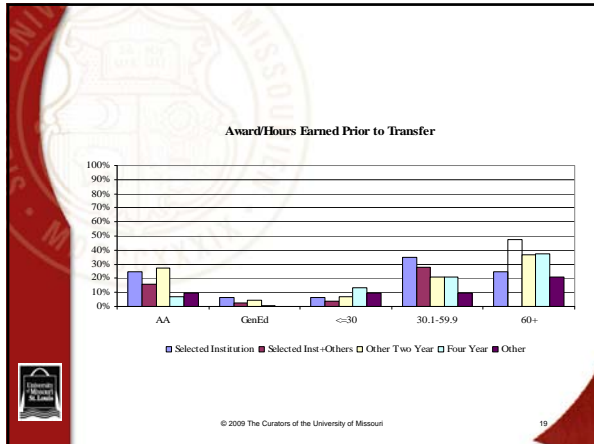


Distribution by Gender

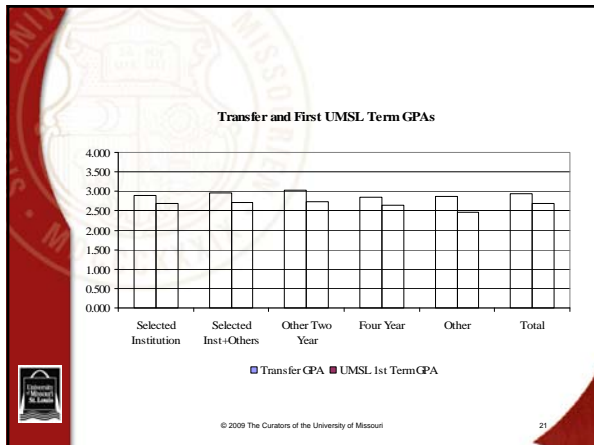


Distribution by Ethnic Origin

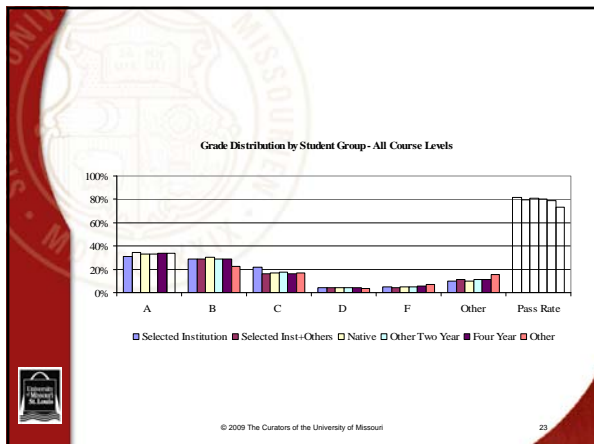




- ## Reports
- Performance
  - Transfer versus first term GPA
  - Term grades
  - Cumulative GPA
  - Graduation GPA
- © 2009 The Curators of the University of Missouri 20



- ## Reports
- Term Performance
  - Aggregation levels
    - Campus
    - School/college
    - Curriculum
    - Course
- © 2009 The Curators of the University of Missouri 22



### FS2007 Term and Cumulative Campus Grade Point Average for Students from

Academic Unit	Group	N	Term GPA		Cumulative GPA	
			Weighted	Un-Weighted	Weighted	Un-Weighted
A & S	Selected Institution	133	2.636	2.619	2.654	2.579
	Selected Inst+Others	292	2.783	2.701	2.719	2.676
	Native	1,070	2.799	2.708	2.801	2.698
	Other Two Year	1,237	2.790	2.685	2.736	2.668
	Four Year	1,046	2.799	2.740	2.798	2.743
	Other	76	2.923	2.849	2.988	2.989
	<b>Total</b>	<b>3,854</b>	<b>2.791</b>	<b>2.708</b>	<b>2.774</b>	<b>2.700</b>

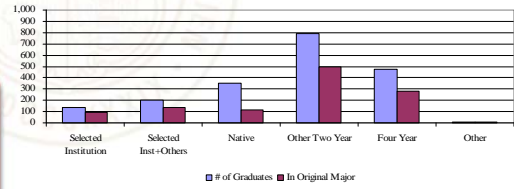
© 2009 The Curators of the University of Missouri 24

## Reports

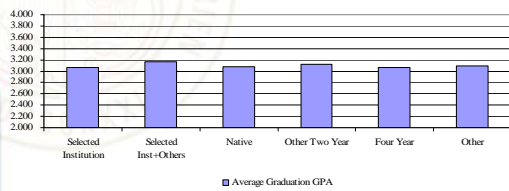
- Degree Recipients
- Number of graduates
- Graduation GPA
- Time to graduation
- Hours taken
- Terms attended



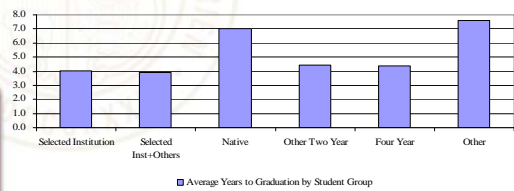
FY2007 Graduates by Student Group



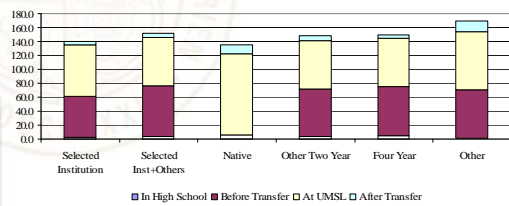
Average Graduation GPA by Student Group



Average Years to Graduation by Student Group



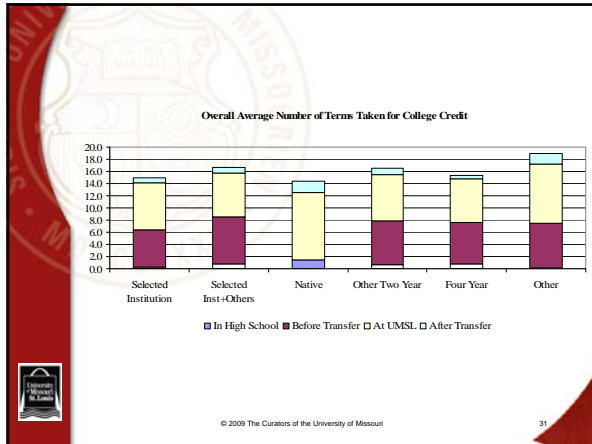
Overall Average Number of Hours Taken



Actually Taking Courses for College Credit

Group	Time Taken in Academic Career	# of Graduates	Overall Mean	Actually Taking Courses for College Credit					
				N	Min	Mean	Median	Max	Std
Selected Institution	In High School	139	1.9	21	4	12.4	13	40	8.87
	Before Transfer		59.2	137	3	60.1	63	111	18.72
	At UMSL		74.4	139	31	74.4	70	146	18.12
After Transfer		4.3	53	1	11.2	7	56	11.21	





- ## Observations
- ❑ Differences in transfer and first term at UMSL GPAs
  - ❑ No difference in graduation GPA
  - ❑ Students attending multiple two-year schools attend for more terms
  - ❑ Students attending multiple two-year schools accumulate more hours
- © 2009 The Curators of the University of Missouri

- ## Usage by Partners
- ❑ Presentations to Boards
  - ❑ Institutional effectiveness reviews
  - ❑ Comparisons with other institutions
  - ❑ Advising students
  - ❑ Reinforce accomplishments
- © 2009 The Curators of the University of Missouri

## Questions and Answers

© 2009 The Curators of the University of Missouri

## Feedback to Transfer-Originating Institutions

**COTA Transfer Conference**  
Columbia, Missouri  
January 30, 2009

Mr. Lawrence W. Westermeyer  
Director, Institutional Research  
University of Missouri - St. Louis

Dr. Carol Sholy  
Institutional Research Associate  
University of Missouri - St. Louis

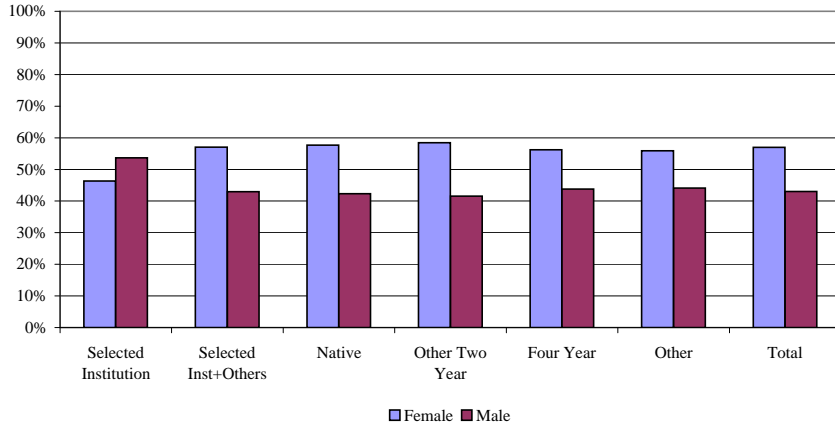
© 2009 The Curators of the University of Missouri

Selected Demographic Characteristics of Fall 2007 On-Campus Undergraduate Students

Sample Institution

Group	Gender			Ethnic Origin								Enrollment Status			
	Total	Female	Male	AfrAm	AmIn	AsPI	Hisp	NRI	Unk	Whi	FTC	Xfer	Cont	Readm	
Selected Institution	421	46%	54%	3%	0%	2%	2%	0%	11%	80%	0%	26%	71%	2%	
Selected Inst+Others	763	57%	43%	12%	0%	5%	1%	1%	17%	64%	0%	23%	73%	4%	
Native	2,455	58%	42%	17%	0%	4%	1%	3%	7%	66%	20%	0%	76%	4%	
Other Two Year	3,101	58%	42%	20%	0%	3%	2%	1%	13%	61%	0%	26%	71%	3%	
Four Year	2,254	56%	44%	19%	0%	3%	2%	4%	15%	57%	0%	33%	62%	5%	
Other	152	56%	44%	20%	0%	1%	3%	6%	14%	57%	0%	28%	64%	7%	
Total	9,146	57%	43%	18%	0%	3%	2%	2%	12%	62%	5%	21%	70%	4%	

Distribution by Gender



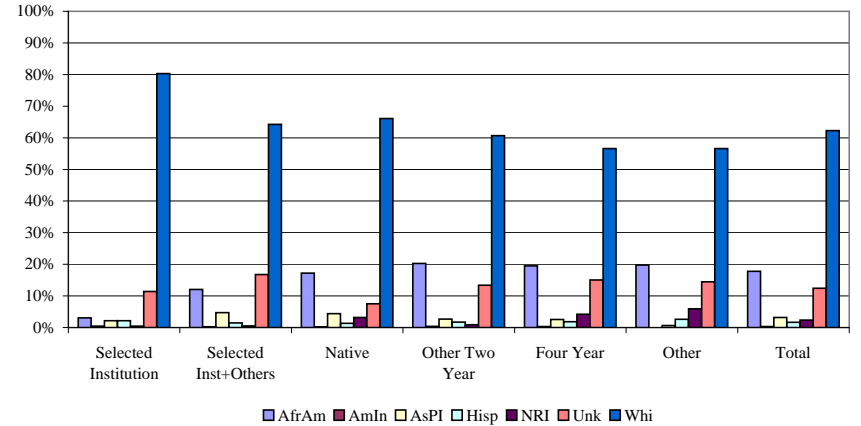
Selected Institution - student previously attended only the institution listed above.  
 Selected Inst+Others - student most recently attended the institution listed above plus other institutions.  
 Native - student started at UMSL as a first-time, full-time, degree-seeking freshman.  
 Other Two Year - student most recently attended another two-year institution.  
 Four Year - student most recently attended another four-year institution.  
 Other - most recent academic experience is military credit, credit by exam or unknown.

Selected Demographic Characteristics of Fall 2007 On-Campus Undergraduate Students

Sample Institution

Group	Gender			Ethnic Origin								Enrollment Status			
	Total	Female	Male	AfrAm	AmIn	AsPI	Hisp	NRI	Unk	Whi	FTC	Xfer	Cont	Readm	
Selected Institution	421	46%	54%	3%	0%	2%	2%	0%	11%	80%	0%	26%	71%	2%	
Selected Inst+Others	763	57%	43%	12%	0%	5%	1%	1%	17%	64%	0%	23%	73%	4%	
Native	2,455	58%	42%	17%	0%	4%	1%	3%	7%	66%	20%	0%	76%	4%	
Other Two Year	3,101	58%	42%	20%	0%	3%	2%	1%	13%	61%	0%	26%	71%	3%	
Four Year	2,254	56%	44%	19%	0%	3%	2%	4%	15%	57%	0%	33%	62%	5%	
Other	152	56%	44%	20%	0%	1%	3%	6%	14%	57%	0%	28%	64%	7%	
Total	9,146	57%	43%	18%	0%	3%	2%	2%	12%	62%	5%	21%	70%	4%	

Distribution by Ethnic Origin



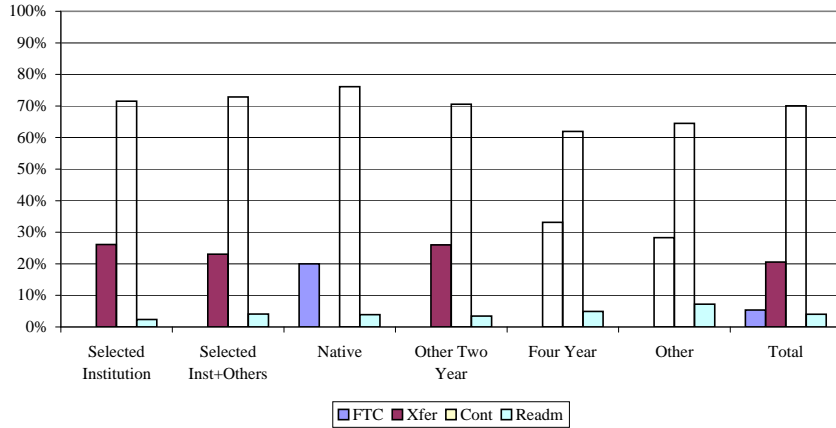
AfrAm - African American.  
 AmIn - American Indian/Alaskan Native.  
 AsPI - Asian/Pacific Islander.  
 NRI - Non-resident International.  
 Unk - Unknown. Includes missing, other and refused to answer.  
 Whi - White, non-Hispanic.

**Selected Demographic Characteristics of Fall 2007 On-Campus Undergraduate Students**

**Sample Institution**

Group	Gender		Ethnic Origin								Enrollment Status			
	Total	Female	Male	AfrAm	AmIn	AsPI	Hisp	NRI	Unk	Whi	FTC	Xfer	Cont	Readm
Selected Institution	421	46%	54%	3%	0%	2%	2%	0%	11%	80%	0%	26%	71%	2%
Selected Inst+Others	763	57%	43%	12%	0%	5%	1%	1%	17%	64%	0%	23%	73%	4%
Native	2,455	58%	42%	17%	0%	4%	1%	3%	7%	66%	20%	0%	76%	4%
Other Two Year	3,101	58%	42%	20%	0%	3%	2%	1%	13%	61%	0%	26%	71%	3%
Four Year	2,254	56%	44%	19%	0%	3%	2%	4%	15%	57%	0%	33%	62%	5%
Other	152	56%	44%	20%	0%	1%	3%	6%	14%	57%	0%	28%	64%	7%
<b>Total</b>	<b>9,146</b>	<b>57%</b>	<b>43%</b>	<b>18%</b>	<b>0%</b>	<b>3%</b>	<b>2%</b>	<b>2%</b>	<b>12%</b>	<b>62%</b>	<b>5%</b>	<b>21%</b>	<b>70%</b>	<b>4%</b>

**Distribution by Enrollment Status**



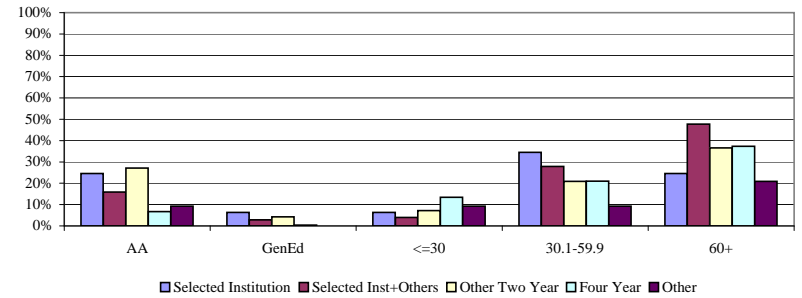
FTC - first-time college student.  
 Xfer - first time transfer student.  
 Cont - continuing student.  
 Readm - readmitted student.

**Award/Hours Earned Prior to Transfer Fall 2007 On-Campus Undergraduate Students**

**Sample Institution**

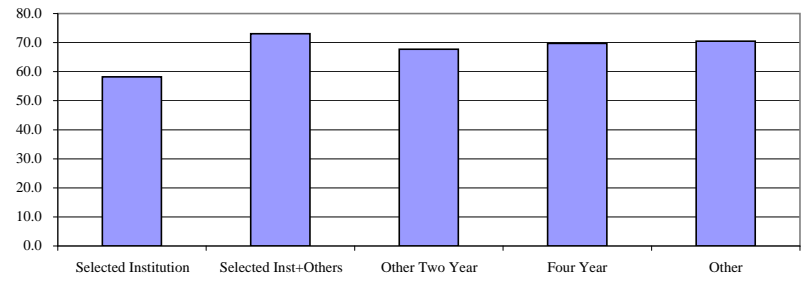
Group	Total Transfers	Award/Hours Earned					Avg Hrs Transferred
		AA	GenEd	<=30	30.1-59.9	60+	
Selected Institution	110	25%	6%	6%	35%	25%	58.2
Selected Inst+Others	176	16%	3%	4%	28%	48%	73.1
Other Two Year	806	27%	4%	7%	21%	37%	67.7
Four Year	747	7%	0%	13%	21%	37%	69.8
Other	43	9%		9%	9%	21%	70.5
<b>Total</b>	<b>1,882</b>	<b>17%</b>	<b>3%</b>	<b>9%</b>	<b>22%</b>	<b>37%</b>	<b>68.4</b>

**Award/Hours Earned Prior to Transfer**



AA - transferred with an Associates of Arts degree.  
 GenEd - transferred with general education block completed.  
 <=30 - transferred with 30 or fewer hours.  
 30.1-59.9 - transferred with more than 30 and less than 60 hours. Did not complete general education block.  
 60+ - transferred with 60 or more hours, but did not complete AA or general education block.

**Average Hours Transferred by Group**

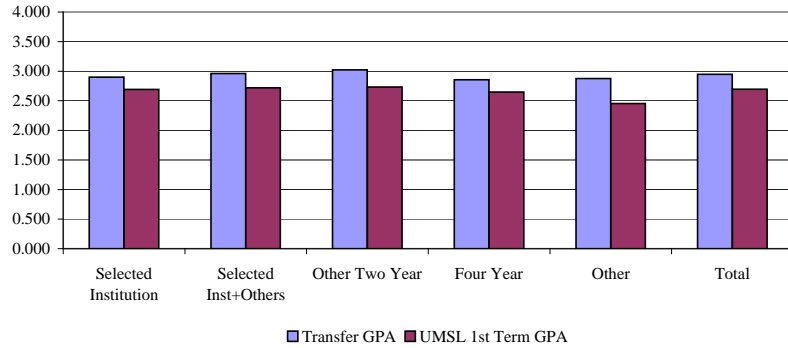


**GPA Comparison for New Fall 2007 Transfer On-Campus Undergraduate Students**

**Sample Institution**

Group	Total Transfers w/ Both GPAs	Transfer GPA	UMSL 1st Term GPA
Selected Institution	105	2.900	2.693
Selected Inst+Others	168	2.960	2.719
Other Two Year	743	3.024	2.732
Four Year	547	2.854	2.648
Other	20	2.875	2.454
Total	1,583	2.948	2.695

**Transfer and First UMSL Term GPAs**



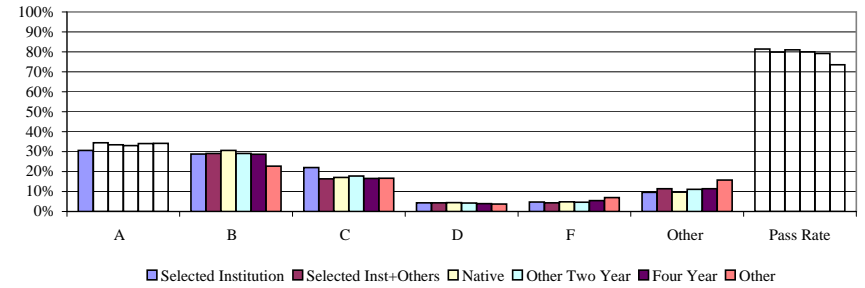
**Fall 2007 - Comparison of Performance by Student Group**

**Sample Institution**

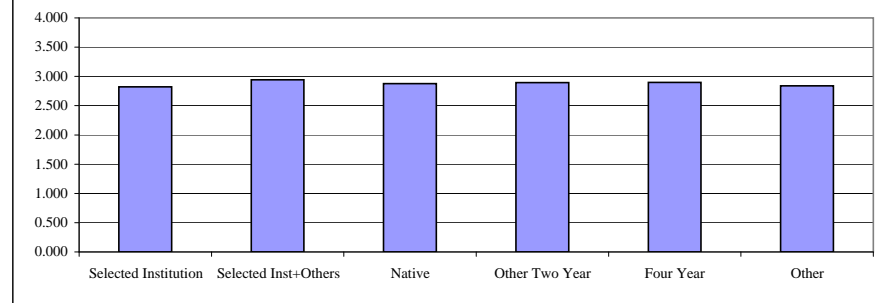
**Campus**

Group	N	Grades - All Course Levels						Pass Rate	GPA
		A	B	C	D	F	Other		
Selected Institution	1,508	31%	29%	22%	4%	5%	10%	81%	2.822
Selected Inst+Others	2,717	34%	29%	16%	4%	4%	11%	80%	2.941
Native	9,823	33%	31%	17%	4%	5%	10%	81%	2.878
Other Two Year	10,582	33%	29%	18%	4%	5%	11%	80%	2.896
Four Year	7,748	34%	29%	17%	4%	5%	11%	79%	2.899
Other	457	34%	23%	17%	4%	7%	16%	74%	2.837

**Grade Distribution by Student Group - All Course Levels**



**GPA by Student Group - All Course Levels**



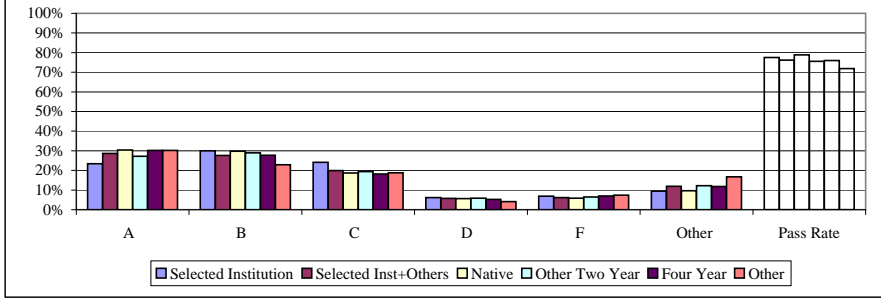
Fall 2007 - Comparison of Performance by Student Group

Sample Institution

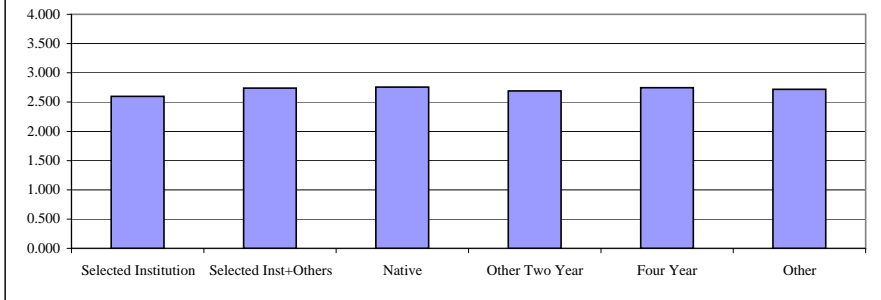
Campus

Group	N	Grades - Lower Division Courses						Pass Rate	GPA
		A	B	C	D	F	Other		
Selected Institution	760	23%	30%	24%	6%	7%	9%	78%	2.599
Selected Inst+Others	1,294	29%	28%	20%	6%	6%	12%	76%	2.740
Native	6,710	30%	30%	19%	6%	6%	10%	79%	2.755
Other Two Year	5,546	27%	29%	19%	6%	6%	12%	76%	2.691
Four Year	4,521	30%	28%	18%	5%	7%	12%	76%	2.747
Other	245	30%	23%	19%	4%	7%	17%	72%	2.718

Grade Distribution by Student Group - Lower Division Courses



GPA by Student Group - Lower Division Courses



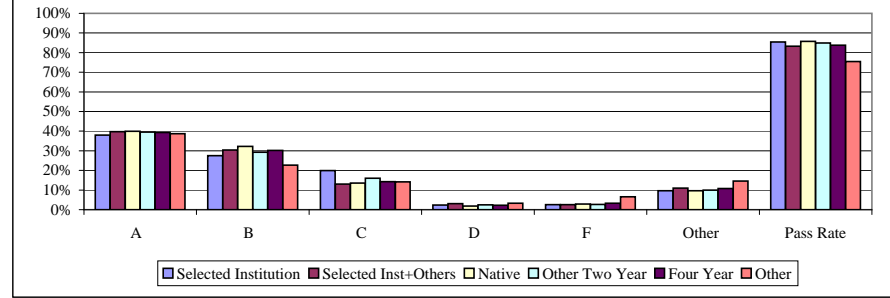
Fall 2007 - Comparison of Performance by Student Group

Sample Institution

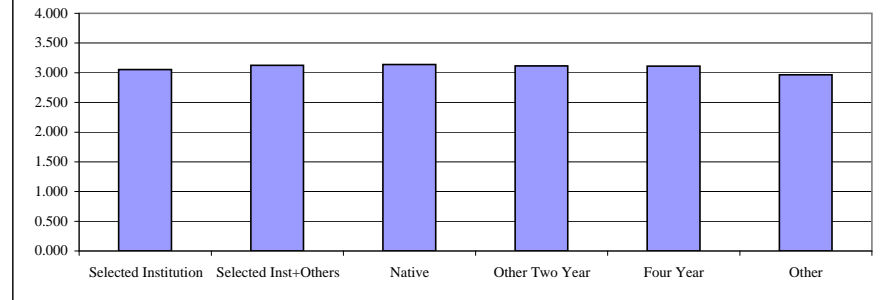
Campus

Group	N	Grades - Upper Division Courses						Pass Rate	GPA
		A	B	C	D	F	Other		
Selected Institution	748	38%	28%	20%	2%	3%	10%	85%	3.053
Selected Inst+Others	1,423	40%	30%	13%	3%	3%	11%	83%	3.123
Native	3,113	40%	32%	14%	2%	3%	10%	86%	3.137
Other Two Year	5,036	40%	29%	16%	3%	3%	10%	85%	3.113
Four Year	3,227	39%	30%	14%	2%	3%	11%	84%	3.111
Other	212	39%	23%	14%	3%	7%	15%	75%	2.967

Grade Distribution by Student Group - Upper Division Courses



GPA by Student Group - Upper Division Courses



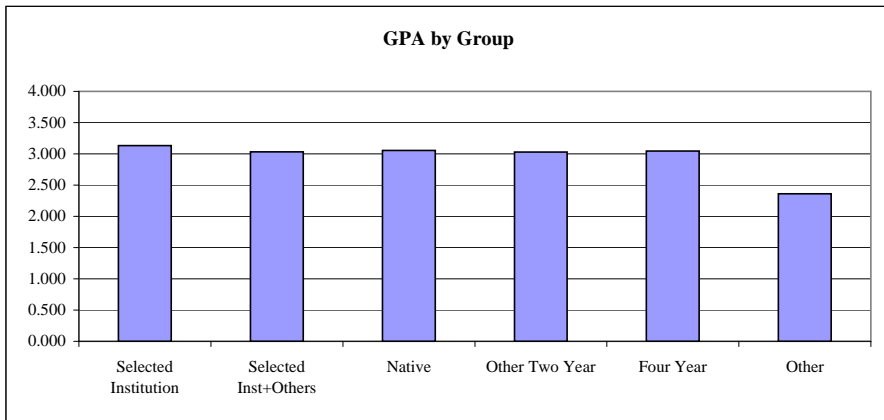
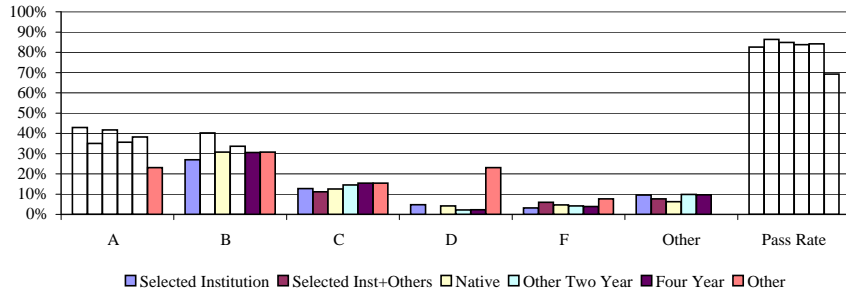
Fall 2007 - Comparison of Performance by Student Group

Sample Institution

Course: JrCmp Junior English Comp

Group	N	Grades						Pass Rate	GPA
		A	B	C	D	F	Other		
Selected Institution	63	43%	27%	13%	5%	3%	10%	83%	3.133
Selected Inst+Others	117	35%	40%	11%	0%	6%	8%	86%	3.031
Native	192	42%	31%	13%	4%	5%	6%	85%	3.054
Other Two Year	455	36%	34%	15%	2%	4%	10%	84%	3.028
Four Year	259	38%	31%	15%	2%	4%	10%	84%	3.046
Other	13	23%	31%	15%	23%	8%	0%	69%	2.362

Grade Distribution by Student Group



FS2007 Term and Cumulative Campus Grade Point Average for Students from Sample Institution

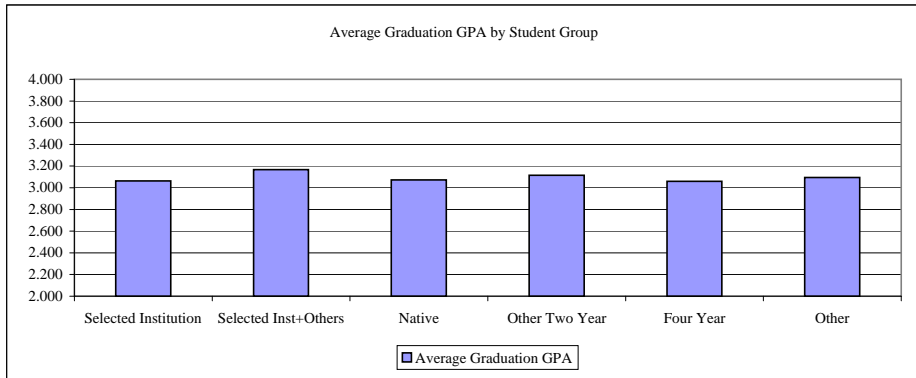
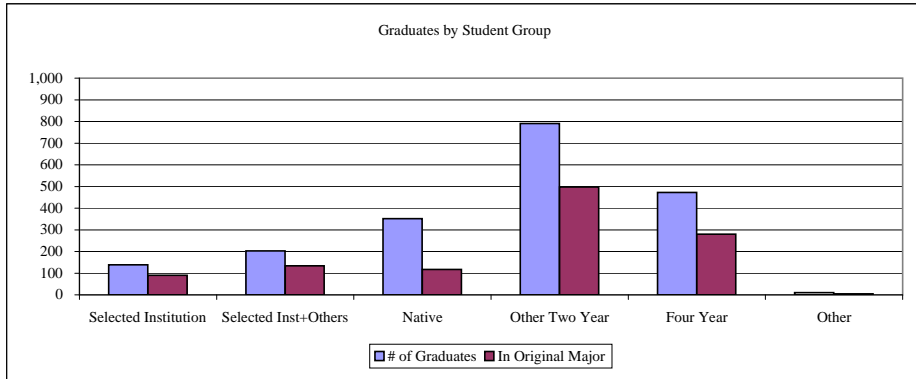
Academic Unit	Group	N	Term GPA		Cumulative GPA	
			Weighted	Un-Weighted	Weighted	Un-Weighted
A & S	Selected Institution	133	2.636	2.619	2.654	2.579
	Selected Inst+Others	292	2.783	2.701	2.719	2.676
	Native	1,070	2.799	2.708	2.801	2.698
	Other Two Year	1,237	2.790	2.685	2.736	2.668
	Four Year	1,046	2.799	2.740	2.798	2.743
	Other	76	2.923	2.849	2.988	2.989
	Total	3,854	2.791	2.708	2.774	2.700
B ADM	Selected Institution	154	2.820	2.717	2.654	2.663
	Selected Inst+Others	239	2.766	2.709	2.761	2.745
	Native	650	2.845	2.757	2.755	2.704
	Other Two Year	848	2.754	2.689	2.691	2.668
	Four Year	548	2.800	2.729	2.760	2.704
	Other	34	2.333	2.013	2.600	2.381
	Total	2,473	2.791	2.710	2.729	2.689
EDUC	Selected Institution	60	3.232	3.158	3.112	3.058
	Selected Inst+Others	119	3.389	3.358	3.255	3.259
	Native	208	3.317	3.214	3.148	3.117
	Other Two Year	395	3.335	3.257	3.188	3.153
	Four Year	257	3.258	3.211	3.173	3.085
	Other	16	2.985	2.891	3.116	2.980
	Total	1,055	3.309	3.238	3.176	3.133
ENGR	Selected Institution	9	2.276	2.291	2.505	2.470
	Selected Inst+Others	21	3.033	2.914	2.839	2.902
	Native	120	2.714	2.605	2.801	2.672
	Other Two Year	127	2.710	2.667	2.739	2.698
	Four Year	60	2.658	2.774	2.826	2.789
	Other	4	1.415	1.192	1.884	1.618
	Total	341	2.693	2.649	2.775	2.698
FA&C	Selected Institution	49	2.787	2.551	2.718	2.651
	Selected Inst+Others	61	3.160	3.108	3.016	2.943
	Native	238	2.916	2.833	2.889	2.822
	Other Two Year	279	2.953	2.897	2.932	2.867
	Four Year	231	3.031	2.949	3.015	2.910
	Other	9	3.477	3.412	3.270	3.324
	Total	867	2.974	2.894	2.933	2.864
NURS	Selected Institution	15	2.778	2.778	3.000	2.850
	Selected Inst+Others	32	3.221	3.268	3.179	3.241
	Native	169	2.987	2.958	3.080	3.023
	Other Two Year	215	3.152	3.216	3.114	3.237
	Four Year	112	3.150	3.167	3.222	3.198
	Other	13	3.316	3.322	3.133	3.184
	Total	556	3.090	3.121	3.121	3.152
Total	Selected Institution	420	2.820	2.725	2.729	2.694
	Selected Inst+Others	764	2.945	2.871	2.876	2.841
	Native	2,455	2.880	2.790	2.853	2.768
	Other Two Year	3,101	2.897	2.816	2.831	2.789
	Four Year	2,254	2.901	2.837	2.888	2.814
	Other	152	2.838	2.693	2.943	2.852
	Total	9,146	2.892	2.812	2.851	2.790

Note: The Weighted GPA is calculated by dividing the total quality points by the total hours attempted. The Un-Weighted GPA is calculated by summing the GPAs and dividing by the number of students.

Selected Measures for FY2007 Bachelors Degree Recipients by Student Group

Sample Institution

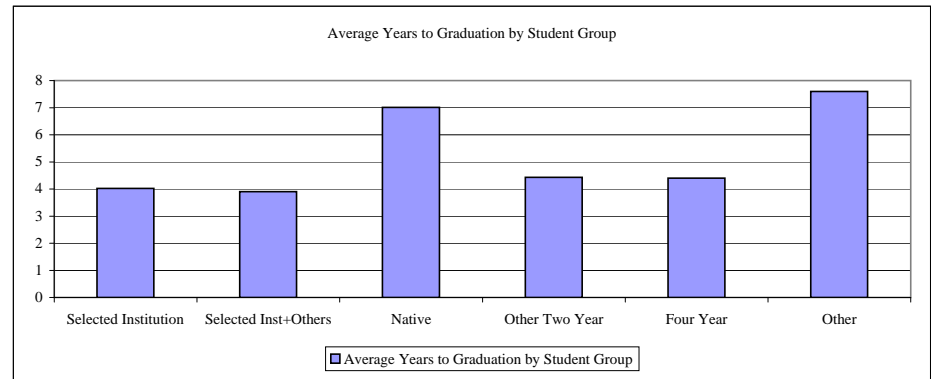
Group	# of Graduates	In Original Major	Graduation GPA					Years to Graduation				
			Min	Mean	Median	Max	Std	Min	Mean	Median	Max	Std
Selected Institution	139	90	1.935	3.062	3.083	3.969	0.515	2	4.0	3.0	29	3.07
Selected Inst+Others	203	134	1.997	3.167	3.241	4.000	0.519	1	3.9	3.0	20	2.77
Native	352	117	2.056	3.073	3.066	4.000	0.494	3	7.0	5.0	34	5.31
Other Two Year	791	498	1.957	3.116	3.142	4.000	0.527	1	4.4	3.0	32	3.80
Four Year	473	280	2.008	3.060	3.099	4.000	0.530	1	4.4	3.0	30	3.95
Other	10	5	2.327	3.095	2.994	3.925	0.641	2	7.6	5.5	22	6.33



Selected Measures for FY2007 Bachelors Degree Recipients by Student Group

Sample Institution

Group	# of Graduates	In Original Major	Graduation GPA					Years to Graduation				
			Min	Mean	Median	Max	Std	Min	Mean	Median	Max	Std
Selected Institution	139	90	1.935	3.062	3.083	3.969	0.515	2	4.0	3.0	29	3.07
Selected Inst+Others	203	134	1.997	3.167	3.241	4.000	0.519	1	3.9	3.0	20	2.77
Native	352	117	2.056	3.073	3.066	4.000	0.494	3	7.0	5.0	34	5.31
Other Two Year	791	498	1.957	3.116	3.142	4.000	0.527	1	4.4	3.0	32	3.80
Four Year	473	280	2.008	3.060	3.099	4.000	0.530	1	4.4	3.0	30	3.95
Other	10	5	2.327	3.095	2.994	3.925	0.641	2	7.6	5.5	22	6.33

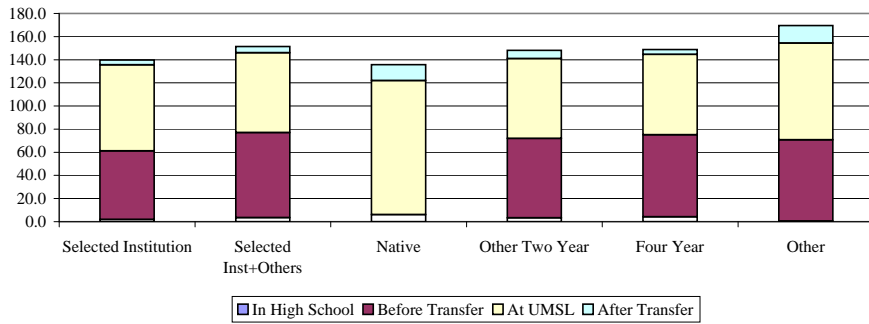


Hours Taken by FY2007 Undegraduate Degree Recipients by Group and Time in Academic Career

Sample Institution

Group	Time Taken in Academic Career	# of Graduates	Overall Mean	Actually Taking Courses for College Credit					Std
				N	Min	Mean	Median	Max	
Selected Institution	In High School	139	1.9	21	4	12.4	13	40	8.87
	Before Transfer		59.2	137	3	60.1	63	111	18.72
	At UMSL		74.4	139	31	74.4	70	146	18.12
	After Transfer		4.3	53	1	11.2	7	56	11.21
Selected Inst+Others	In High School	203	3.5	68	3	10.5	6.5	83	11.98
	Before Transfer		73.5	203	9	73.5	68	330.3	35.88
	At UMSL		69.1	203	28	69.1	66	134	18.88
	After Transfer		5.3	94	1	11.4	6	67	12.26
Native	In High School	352	6.0	248	3	13.7	10	152	15.21
	Before Transfer		0.0	0	0	0.0	0	0	0.00
	At UMSL		116.0	352	27	116.0	119	194	24.37
	After Transfer		13.6	187	1	25.6	14	145	26.75
Other Two Year	In High School	791	3.4	221	0.5	12.0	8	112	13.22
	Before Transfer		68.6	778	3	69.7	66	200	30.47
	At UMSL		69.0	791	5	69.0	66	158	19.59
	After Transfer		7.2	371	1	15.3	7	138	20.41
Four Year	In High School	473	4.2	169	0.5	11.9	9	163.7	17.14
	Before Transfer		70.9	468	3	71.8	71	355	36.05
	At UMSL		69.5	473	10	69.5	67	190	25.86
	After Transfer		4.3	110	3	18.4	9	146	21.48
Other	In High School	10	0.6	1	6	6.0	6	6	0.00
	Before Transfer		70.1	10	15	70.1	70	147	42.01
	At UMSL		83.6	10	40	83.6	81	126	30.58
	After Transfer		15.3	5	3	30.6	12	107	43.43

Overall Average Number of Hours Taken



Terms of College Credit Taken by FY2007 Undegraduate Degree Recipients by Group and Time in Academic Career

Sample Institution

Group	Time Taken in Academic Career	# of Graduates	Overall Mean	Actually Taking Courses for College Credit					Std
				N	Min	Mean	Median	Max	
Selected Institution	In High School	139	0.3	21	1	1.9	2	4	0.94
	Before Transfer		6.2	137	1	6.2	6	17	2.67
	At UMSL		7.7	139	4	7.7	7	19	2.56
	After Transfer		0.8	53	1	1.0	1	8	0.00
Selected Inst+Others	In High School	203	0.8	68	1	2.4	2	13	1.88
	Before Transfer		7.7	203	1	7.7	7	21	4.01
	At UMSL		7.2	203	2	7.2	6	16	2.79
	After Transfer		0.9	94	1	1.4	1	9	1.23
Native	In High School	352	1.4	248	1	2.0	1	11	1.46
	Before Transfer		0.0	0	0	0.0	0	0	0.00
	At UMSL		11.1	352	6	11.1	11	29	3.19
	After Transfer		1.9	187	1	2.3	2	17	1.61
Other Two Year	In High School	791	0.6	221	1	2.2	2	9	1.46
	Before Transfer		7.3	778	1	7.4	7	26	3.88
	At UMSL		7.5	791	1	7.5	7	22	3.04
	After Transfer		1.1	371	1	1.8	1	18	1.70
Four Year	In High School	473	0.8	169	1	2.3	2	22	2.04
	Before Transfer		6.7	468	1	6.8	6.5	23	3.92
	At UMSL		7.2	473	1	7.2	7	29	3.43
	After Transfer		0.6	110	1	2.0	2	18	1.49
Other	In High School	10	0.2	1	2	2.0	2	2	0.00
	Before Transfer		7.3	10	1	7.3	7.5	13	3.83
	At UMSL		9.7	10	6	9.7	7.5	23	5.25
	After Transfer		1.8	5	1	2.0	2	11	0.00

Overall Average Number of Terms Taken for College Credit

