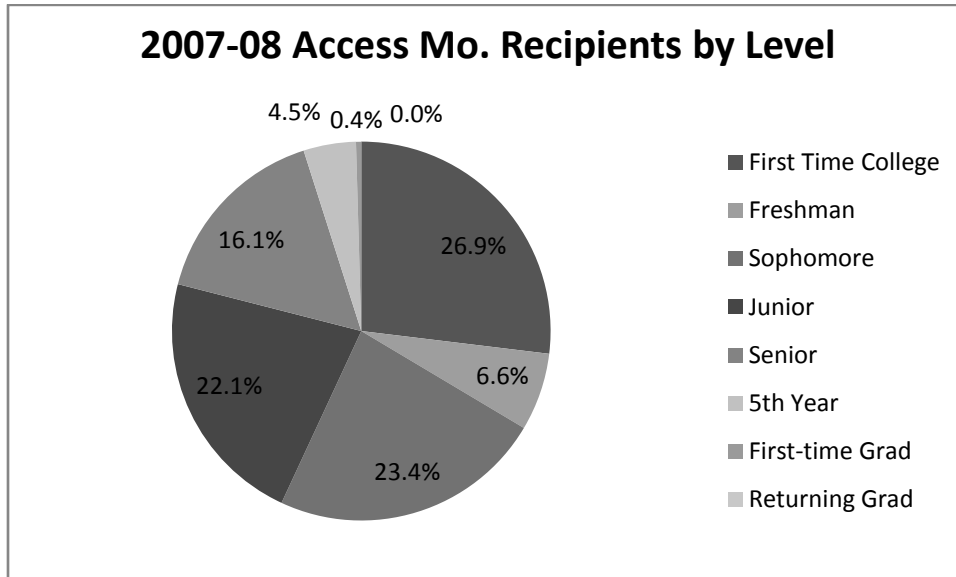


Aid Distribution by Program, 2007-08

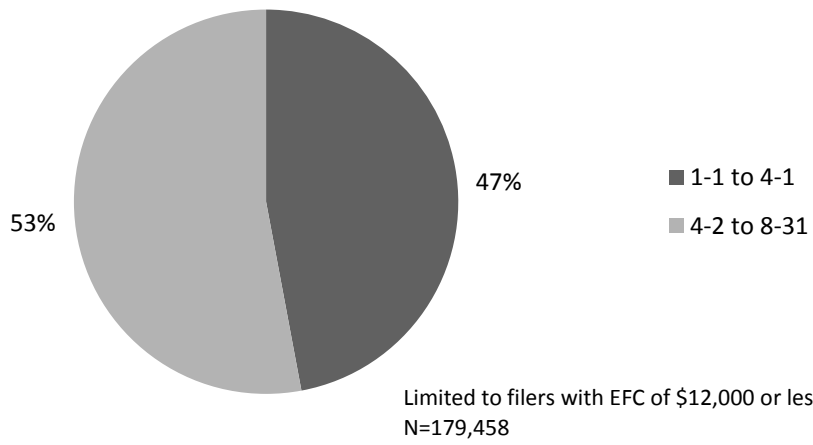
| Program | Students | Dollars |
|-------------------------|----------|--------------|
| Access Missouri | 39,014 | \$72,403,297 |
| Bright Flight | 8,868 | \$16,836,524 |
| Marguerite Ross Barnett | 187 | \$422,997 |
| Total | 48,069 | \$89,662,818 |

Aid Distribution by Program, 2008-2009, as of January 26, 2009

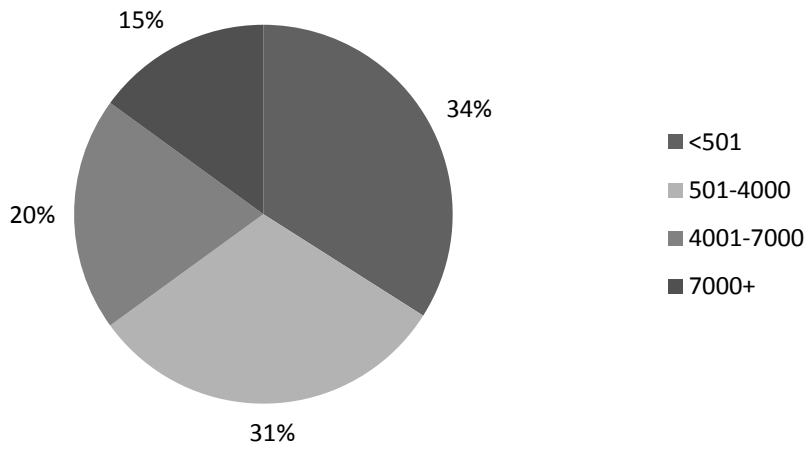
| Program | Students | Dollars |
|-------------------------|----------|--------------|
| Access Missouri | 41,264 | \$63,215,820 |
| Bright Flight | 6,365 | \$13,293,843 |
| Marguerite Ross Barnett | 149 | \$367,219 |
| Total | 47,778 | \$76,876,882 |



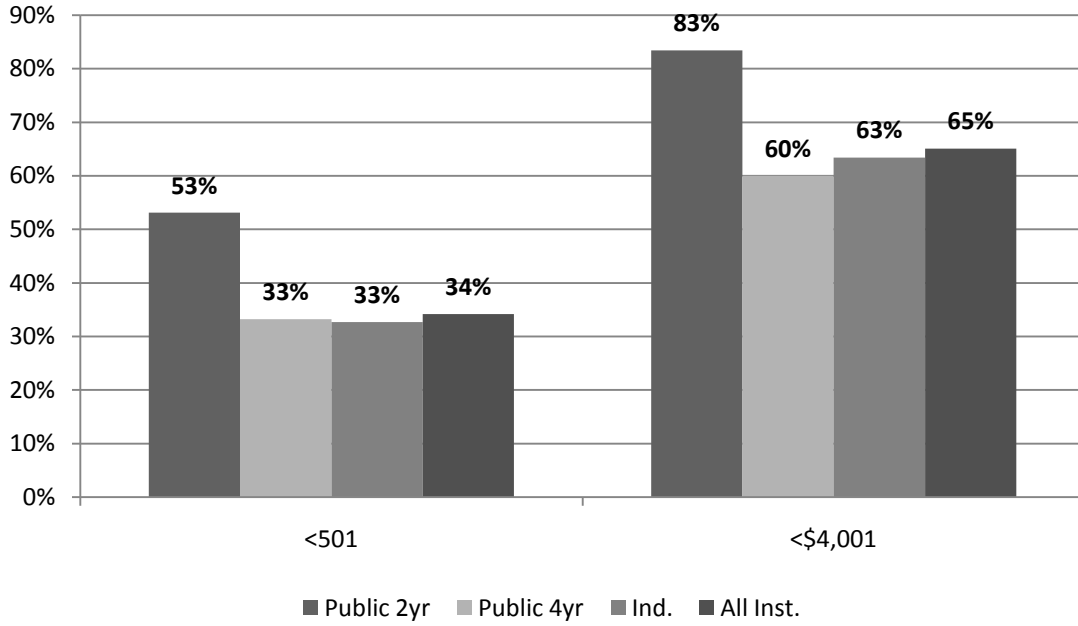
2007-08 FAFSA Filers by Filing Date



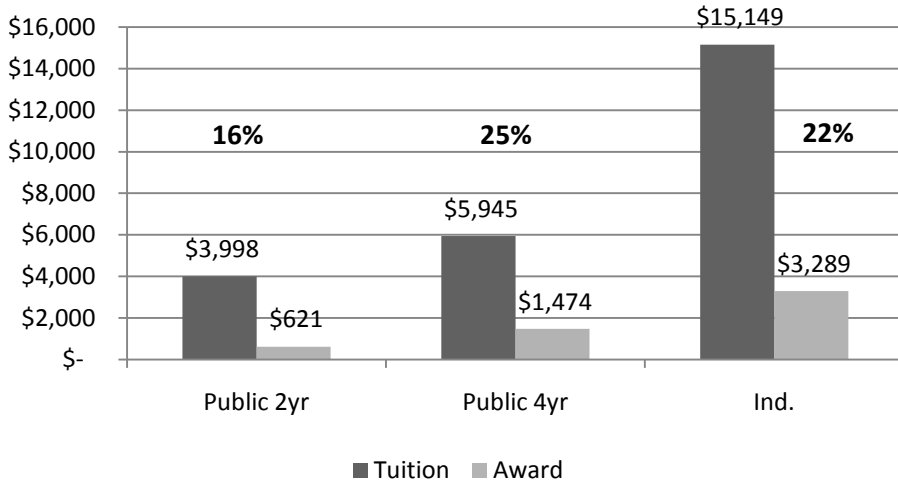
Access Mo Award Dollars by EFC, AY 07-08



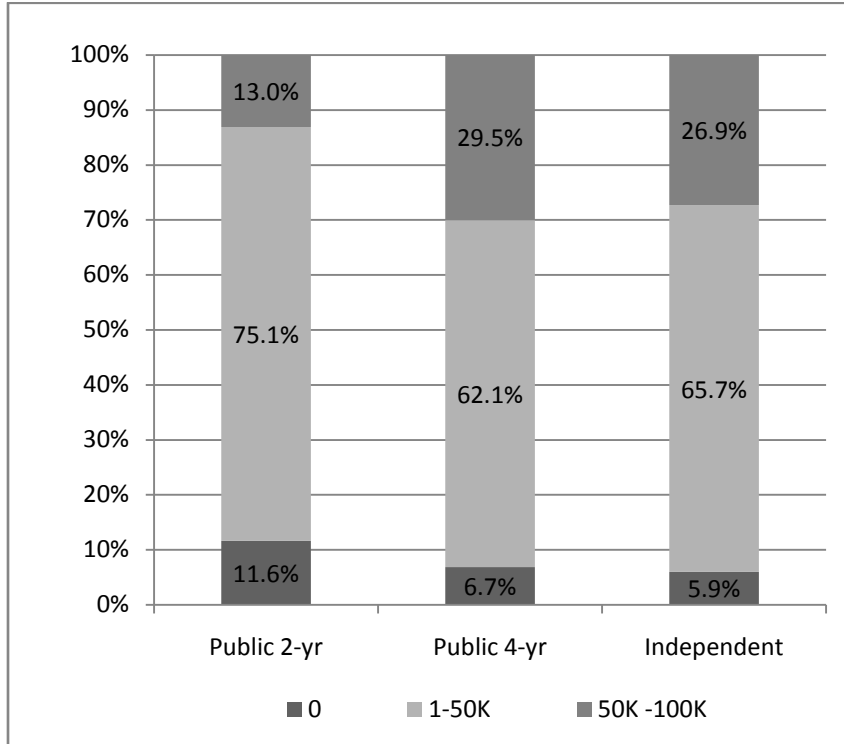
Pct. of Access Missouri Dollars by Sector, by EFC, AY 07-08



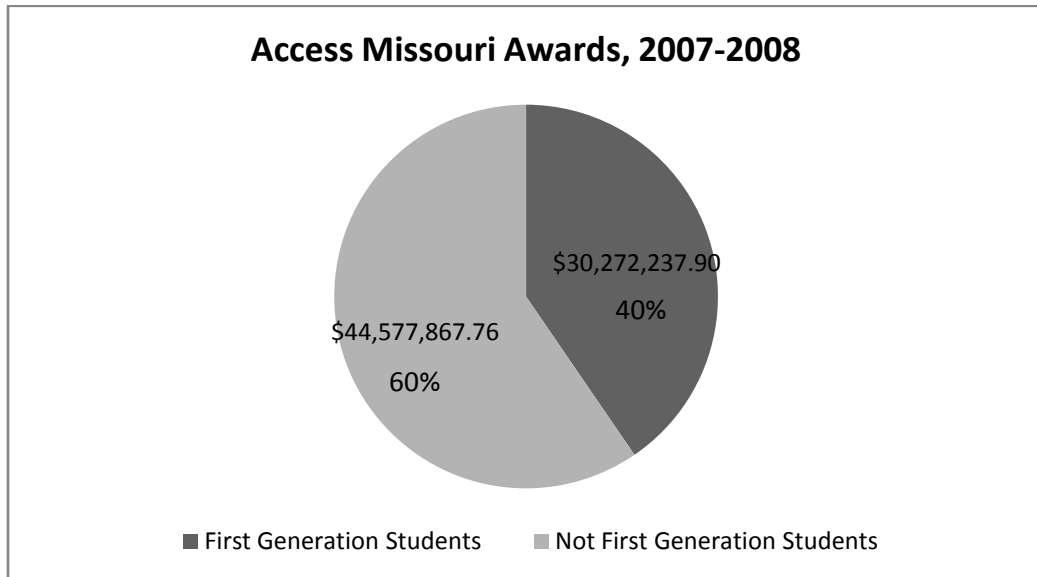
Average Tuition & Average Access Mo. Award, AY 07-08



Percent of Access Missouri Students by Program Sector by AGI
2007-08 Academic Year



Note: 100K to 150K: 0.3% Public 2-yr; 1.7% Public 4-yr; 1.5% Independent
150K +: .01% (3 students)



Note: As reported on the FAFSA (no parent with a postsecondary degree)

| Access Missouri | | |
|---------------------------------------|--------------------|----------------------------------|
| Average AGI for Program and EFC Range | | |
| Academic Year 2007-2008 | | |
| EFC Category | Avg AGI Amt | Percent of Total Students |
| \$0-\$500 | \$ 10,573 | 34.7% |
| \$501-\$1000 | \$ 24,468 | 4.5% |
| \$1001-\$1500 | \$ 28,434 | 4.6% |
| \$1501-\$2000 | \$ 31,487 | 4.5% |
| \$2001-\$2500 | \$ 33,983 | 4.2% |
| \$2501-\$3000 | \$ 35,752 | 3.9% |
| \$3001-\$3500 | \$ 38,053 | 3.6% |
| \$3501-\$4000 | \$ 40,161 | 3.2% |
| \$4001-\$4500 | \$ 43,373 | 3.5% |
| \$4501-\$5000 | \$ 46,160 | 3.2% |
| \$5001-\$5500 | \$ 49,044 | 3.1% |
| \$5501-\$6000 | \$ 50,439 | 2.7% |
| \$6001-\$6500 | \$ 53,705 | 2.6% |
| \$6501-\$7000 | \$ 56,135 | 2.5% |
| \$7001-\$7500 | \$ 57,498 | 2.4% |
| \$7501-\$8000 | \$ 61,504 | 2.3% |
| \$8001-\$8500 | \$ 62,837 | 2.2% |
| \$8501-\$9000 | \$ 64,636 | 1.9% |
| \$9001-\$9500 | \$ 68,536 | 1.8% |
| \$9501-\$10000 | \$ 69,156 | 1.8% |
| \$10001-\$10500 | \$ 71,358 | 1.8% |
| \$10501-\$11000 | \$ 73,708 | 1.8% |
| \$11001-\$11500 | \$ 73,509 | 1.6% |
| \$11501-\$12000 | \$ 76,519 | 1.6% |
| | | |
| Program Average | \$ 34,531 | |

Access Missouri, AY 2008-2009

Distribution by Sector and EFC Range, as of December 12, 2008

| EFC Range | Public 2-year | | Public 4-year | | Independent | | Total | |
|-------------------------|---------------|--------------------|---------------|---------------------|---------------|---------------------|---------------|---------------------|
| | Count | Dollars | Count | Dollars | Count | Dollars | Count | Dollars |
| \$0.00 - \$500.00 | 3,086 | \$1,599,799 | 5,889 | \$6,384,176 | 3,307 | \$7,576,844 | 12,282 | \$15,560,819 |
| \$501.00 - \$1000.00 | 350 | \$168,871 | 842 | \$913,054 | 537 | \$1,192,581 | 1,729 | \$2,274,506 |
| \$1001.00 - \$1500.00 | 321 | \$174,509 | 901 | \$949,133 | 482 | \$1,146,180 | 1,704 | \$2,269,822 |
| \$1501.00 - \$2000.00 | 339 | \$161,772 | 910 | \$968,186 | 500 | \$1,107,942 | 1,749 | \$2,237,900 |
| \$2001.00 - \$2500.00 | 287 | \$135,532 | 829 | \$874,850 | 452 | \$1,005,874 | 1,568 | \$2,016,256 |
| \$2501.00 - \$3000.00 | 248 | \$111,545 | 825 | \$869,972 | 448 | \$1,039,737 | 1,521 | \$2,021,253 |
| \$3001.00 - \$3500.00 | 236 | \$104,785 | 780 | \$819,306 | 432 | \$975,203 | 1,448 | \$1,899,294 |
| \$3501.00 - \$4000.00 | 180 | \$81,284 | 771 | \$811,077 | 366 | \$865,045 | 1,317 | \$1,757,405 |
| \$4001.00 - \$4500.00 | 157 | \$77,448 | 813 | \$866,319 | 421 | \$940,309 | 1,391 | \$1,884,076 |
| \$4501.00 - \$5000.00 | 144 | \$68,000 | 788 | \$840,475 | 420 | \$945,600 | 1,352 | \$1,854,075 |
| \$5001.00 - \$5500.00 | 114 | \$51,000 | 706 | \$747,422 | 387 | \$873,240 | 1,207 | \$1,671,662 |
| \$5501.00 - \$6000.00 | 98 | \$50,324 | 681 | \$721,899 | 323 | \$776,637 | 1,102 | \$1,548,860 |
| \$6001.00 - \$6500.00 | 91 | \$42,135 | 648 | \$722,359 | 310 | \$696,910 | 1,049 | \$1,461,404 |
| \$6501.00 - \$7000.00 | 101 | \$46,000 | 631 | \$669,623 | 303 | \$679,986 | 1,035 | \$1,395,609 |
| \$7001.00 - \$7500.00 | 83 | \$11,250 | 568 | \$400,401 | 316 | \$593,157 | 967 | \$1,004,808 |
| \$7501.00 - \$8000.00 | 76 | \$10,950 | 552 | \$367,917 | 269 | \$488,303 | 897 | \$867,170 |
| \$8001.00 - \$8500.00 | 66 | \$9,603 | 526 | \$337,871 | 258 | \$468,790 | 850 | \$816,264 |
| \$8501.00 - \$9000.00 | 53 | \$7,193 | 537 | \$338,134 | 249 | \$442,464 | 839 | \$787,791 |
| \$9001.00 - \$9500.00 | 62 | \$8,700 | 471 | \$278,717 | 254 | \$455,752 | 787 | \$743,169 |
| \$9501.00 - \$10000.00 | 54 | \$6,986 | 489 | \$296,764 | 211 | \$410,400 | 754 | \$714,150 |
| \$10001.00 - \$10500.00 | 51 | \$7,307 | 492 | \$269,388 | 226 | \$388,515 | 769 | \$665,210 |
| \$10501.00 - \$11000.00 | 41 | \$6,050 | 470 | \$241,843 | 230 | \$396,394 | 741 | \$644,287 |
| \$11001.00 - \$11500.00 | 43 | \$6,277 | 458 | \$222,310 | 233 | \$393,825 | 734 | \$622,412 |
| \$11501.00 - \$12000.00 | 31 | \$4,296 | 452 | \$223,314 | 222 | \$370,505 | 705 | \$598,115 |
| \$12000.00 - \$12500.00 | 38 | \$5,161 | 415 | \$200,543 | 163 | \$269,467 | 616 | \$475,171 |
| \$12501.00 - \$13000.00 | 36 | \$5,100 | 407 | \$198,480 | 141 | \$235,662 | 584 | \$439,242 |
| \$13001.00 - \$13500.00 | 33 | \$4,500 | 341 | \$175,000 | 156 | \$243,179 | 530 | \$422,679 |
| \$13501.00 - \$14000.00 | 33 | \$3,900 | 342 | \$163,384 | 131 | \$201,647 | 506 | \$368,931 |
| Total | 6,452 | \$2,970,276 | 22,534 | \$20,871,916 | 11,747 | \$25,180,148 | 40,733 | \$49,022,339 |

Additional Data Items Under Review

- FAFSA Filing Date by Sector
- Percent of Late FAFSA Filers That Attend College
- Impact of Different Filing Deadlines of Student Eligibility for Access Missouri
- 2008-2009 AGI Averages by Sector and EFC Range
- Access Missouri Awards as Percent of Tuition/Fees by Institutional Mission/Cost
- Access Missouri Awards as Percent of Cost of Attendance
- Percent of Financial Aid Recipients That Graduate/Transfer/Work
- Number and Type of Institutions Listed on FAFSA by Students
- Access Missouri Recipients That are First Generation Students by EFC
- Percent of Bright Flight Eligible Students That Attend Missouri Institution
- Percent of Bright Flight Eligible Students That are Employed in Missouri